

DKNY

UNDERWEAR
WINTER 2026

DKNY COZY BOYFRIEND

DELIVERY: 25.08. - 30.09.2026



WIREFREE PUSH UP BRA

DK4518

- MODAL RICH, COTTON STRETCH WIRELESS, CONTOUR WITH MEDIUM LIFT.
- WIDE ELASTIC UNDERBAND WITH KNIT-IN LOGO.
- ADJUSTABLE, CONVERTIBLE STRAPS WITH J-HOOK FOR VERSATILITY IN WEAR.
- HOOK & EYE BACK CLOSURE.

SIZES: S, M, L, XL

MATERIAL CONTENT:
43% COTTON, 46% MODAL, 11%
ELASTANE

FASHION: BERRY I655A

BASICS: BLACK/DK WHITE (Y3T),
ROSEWOOD (I638Y)

EK 23,90€ / UVP 69,90€



THONG

DK4529

- MODAL RICH, COTTON STRETCH THONG.
- WIDE ELASTIC WAISTBAND WITH KNIT-IN LOGO.
- MINIMAL BACK COVERAGE.
- LINED AT GUSSET.

SIZES: S, M, L, XL

MATERIAL CONTENT:
43% COTTON, 46% MODAL, 11%
ELASTANE

FASHION: BERRY I655A

BASICS: DK WHITE/DK BLACK
(DLV),BLACK/DK WHITE (Y3T),
ROSEWOOD (I638Y)

EK 8,90€ / UVP 24,90€



BIKINI

DK4513

- MODAL RICH, COTTON STRETCH BIKINI.
- WIDE ELASTIC WAISTBAND WITH KNIT-IN LOGO.
- MODERATE, "CHEEKY" BACK COVERAGE.
- LINED AT GUSSET.

SIZES: S, M, L, XL

MATERIAL CONTENT:
43% COTTON, 46% MODAL, 11%
ELASTANE

FASHION: BERRY I655A

BASICS: DK WHITE (DLV), BLACK/
(Y3T), ROSEWOOD (I638Y)

EK 6,90€ / UVP 19,90€

FALL 2026:

FASHION



BERRY
I655A

BASICS



WHITE
I100A
DLV



BLACK
I001A
Y3T



ROSEWOOD
I638Y

SUMMER 2026

FASHION



FESTIVAL
FUCHSIA
I671Y



BRIEF

DK8195

- SHEER STRETCH MESH.
- SMOOTH STRETCH ELASTIC WAISTBAND AND LEG OPENINGS.
- MODERN CUT. FULL BACK COVERAGE.
- LINED AT GUSSET.

SIZES: S, M, L, XL

MATERIAL CONTENT:
90% NYLON, 10% ELASTANE

FASHION: CELESTIAL I451C

BASICS: BLACK (I001A), WHITE (I100A), CASHMERE (I103Y)

EK 9,90€ / UVP 29,90€



BIKINI

DK8945

- SHEER MESH PANEL AT FRONT AND BACK.
- NO PINCH WAISTBAND.
- LOW RISE. MODERATE, "CHEEKY" BACK COVERAGE.
- LINED AT GUSSET.

SIZES: S, M, L, XL

MATERIAL CONTENT:
90% NYLON, 10% ELASTANE

FASHION: CELESTIAL I451C

BASICS: BLACK (I001A), WHITE (I100A), CASHMERE (I103Y)

EK 9,90€ / UVP 29,90€



TRIANGLE MESH BRALETTE

DK4084

- UNLINED, WIRELESS TRIANGLE MESH CUPS.
- SOFT STRETCH ELASTIC CROSSOVER CREATES AN ALLURING CUTOUT.
- WIDE, SOFT TOUCH ELASTIC STRAPS AND UNDERBAND.
- ADJUSTABLE STRAPS.
- HOOK & EYE BACK CLOSURE.

SIZES: S, M, L, XL

MATERIAL CONTENT:
90% NYLON, 10% ELASTANE

FASHION: CELESTIAL I451C

BASICS: DKBLACK (B7P), DK WHITE (B8J), CASHMERE (I103Y)

EK 19,90€ / UVP 59,90€

FALL 2026:

FASHION



CELESTIAL
I451C

BASICS



BLACK
(I001A)
B7P



CASHMERE
I103Y



WHITE
(I100A)
B8J

SUMMER 2026

FASHION



FESTIVAL
FUCHSIA
I671Y

DKNY SHEERS



**TRIANGLE
MESH BRALETTE
DK4084**

- UNLINED, WIRELESS TRIANGLE MESH CUPS.
- SOFT STRETCH ELASTIC CROSSOVER CREATES AN ALLURING CUTOUT.
- WIDE, SOFT TOUCH ELASTIC STRAPS AND UNDERBAND.
- ADJUSTABLE STRAPS.
- HOOK & EYE BACK CLOSURE.

SIZES: S, M, L, XL

MATERIAL CONTENT:
90% NYLON, 10% ELASTANE

FASHION: PINK MOON I147Y

BASICS: DKBLACK (B7P), DK WHITE (B8J), CASHMERE (I103Y)

EK 19,90€ / UVP 59,90€



BRIEF

DK8195

- SHEER STRETCH MESH.
- SMOOTH STRETCH ELASTIC WAISTBAND AND LEG OPENINGS.
- MODERN CUT. FULL BACK COVERAGE.
- LINED AT GUSSET.

SIZES: S, M, L, XL

MATERIAL CONTENT:
90% NYLON, 10% ELASTANE

FASHION: PINK MOON I147Y

BASICS: BLACK (I001A), WHITE (I100A), CASHMERE (I103Y)

EK 9,90€ / UVP 29,90€



BIKINI

DK8945

- SHEER MESH PANEL AT FRONT AND BACK.
- NO PINCH WAISTBAND.
- LOW RISE. MODERATE, "CHEEKY" BACK COVERAGE.
- LINED AT GUSSET.

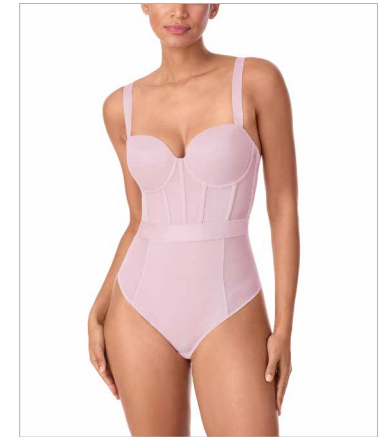
SIZES: S, M, L, XL

MATERIAL CONTENT:
90% NYLON, 10% ELASTANE

FASHION: PINK MOON I147Y

BASICS: BLACK (I001A), WHITE (I100A), CASHMERE (I103Y)

EK 9,90€ / UVP 29,90€



**CUPPED STRAPLESS
BODYSUIT
DK6008**

- LINED, UNDERWIRE, CONTOURING MESH CUPS.
- MESH PANELS AT FRONT AND BACK.
- ADJUSTABLE, REMOVABLE STRAPS.
- LINED AT GUSSET. THONG BACK.

SIZES: 70-80B, 75-85C, 75-85D, 75DD

MATERIAL CONTENT:
90% NYLON, 10% ELASTANE

FASHION: PINK MOON I147Y

BASICS: DKBLACK (B7P), DK WHITE (B8J), CASHMERE (I103Y)

EK 29,90€ / UVP 89,90€

WINTER 2026:

FASHION



PINK MOON
I147Y

BASICS



BLACK
(I001A)
B7P



CASHMERE
I103Y



WHITE
(I100A)
B8J

FALL 2026:

FASHION



CELESTIAL
I451C

CONTACT US:



Friedewalder Str. 34 h
36251 Bad Hersfeld



0049 6621 61027



info@gattina.de



www.gattina.de

Per me...
gattina